

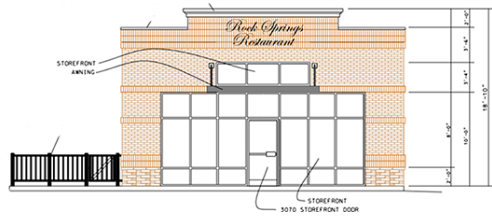
LEASE

**PRIME COMMERCIAL
REALTY, LLC**

CALL NOW 615-618-1172
wmiller@wwmiller.com



1800 Sq. Ft. + 480 Sq. Ft. Patio



📍 2124 Rock Springs Road Smyrna, TN 37167

+/- 16k VPD Traffic

Restaurant with 480 Sq Ft. Outdoor Patio

Signalized Intersection

1800 Sq. Ft. Space for Lease

'Close to Home' Location

Neighbors StoneCrest Hospital

**PRIME COMMERCIAL
REALTY, LLC**

WENDAL W. MILLER
BROKER

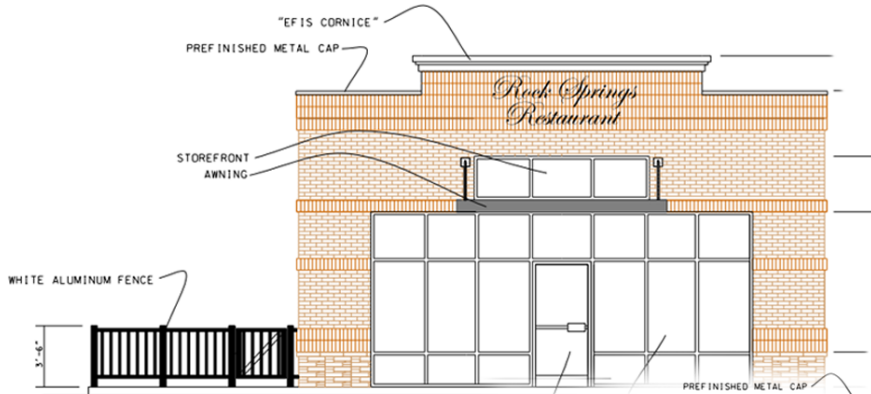
wmiller@wwmiller.com

615-618-1172

LEASE

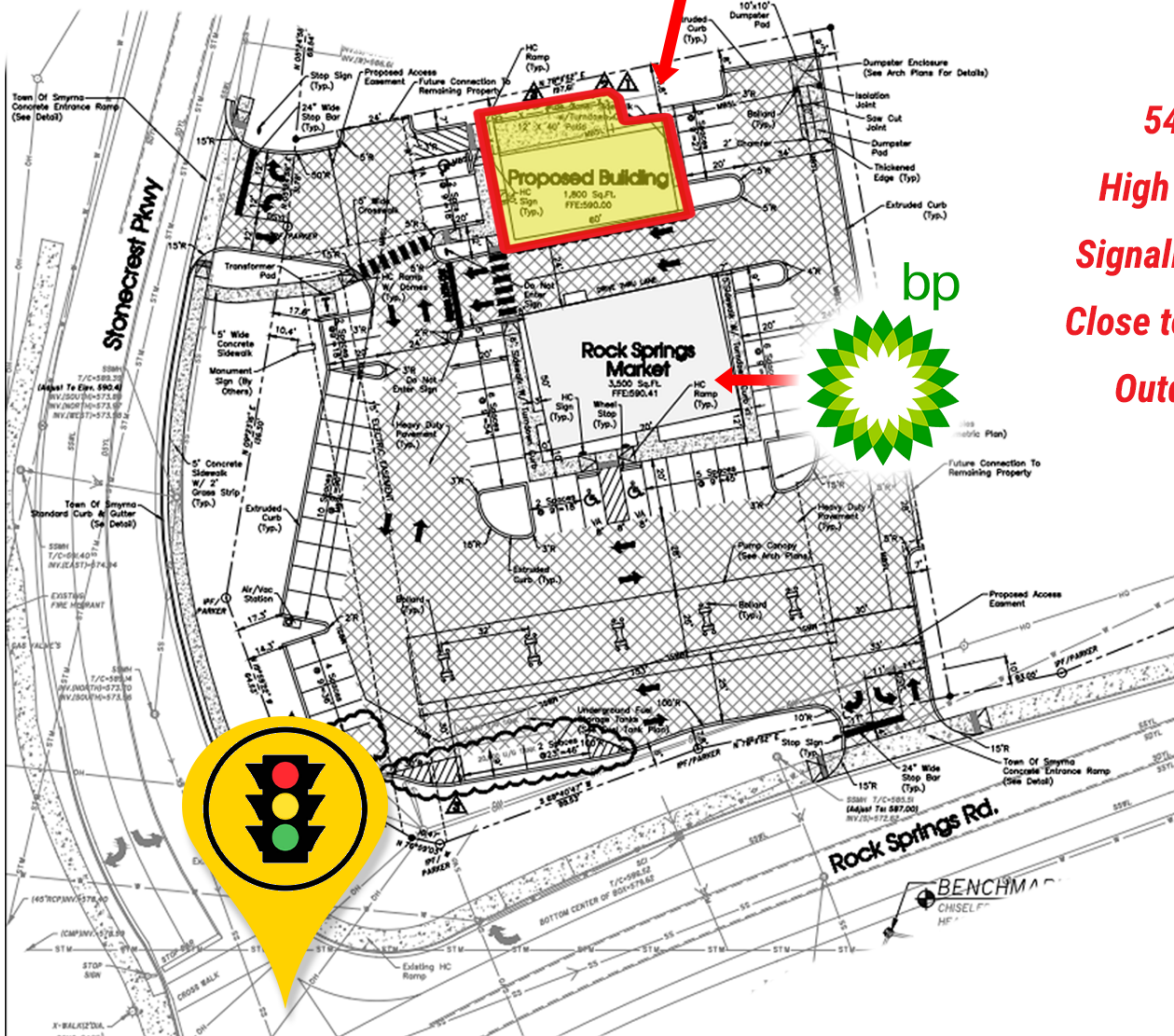
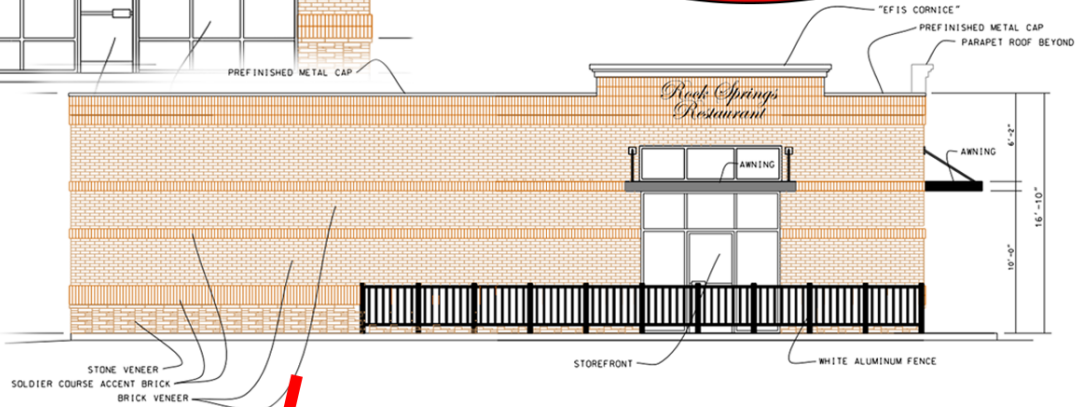
PRIME COMMERCIAL REALTY, LLC

CALL NOW 615-618-1172
wmiller@wwmiller.com



FOR LEASE
1800 Sq. Ft. Restaurant Space
480 Sq. Ft. Outdoor Patio

BUILD TO SUIT



54 Parking Spaces
High Traffic Neighbor
Signalized Intersection
Close to Home Location
Outdoor Patio Space

PRIME COMMERCIAL REALTY, LLC

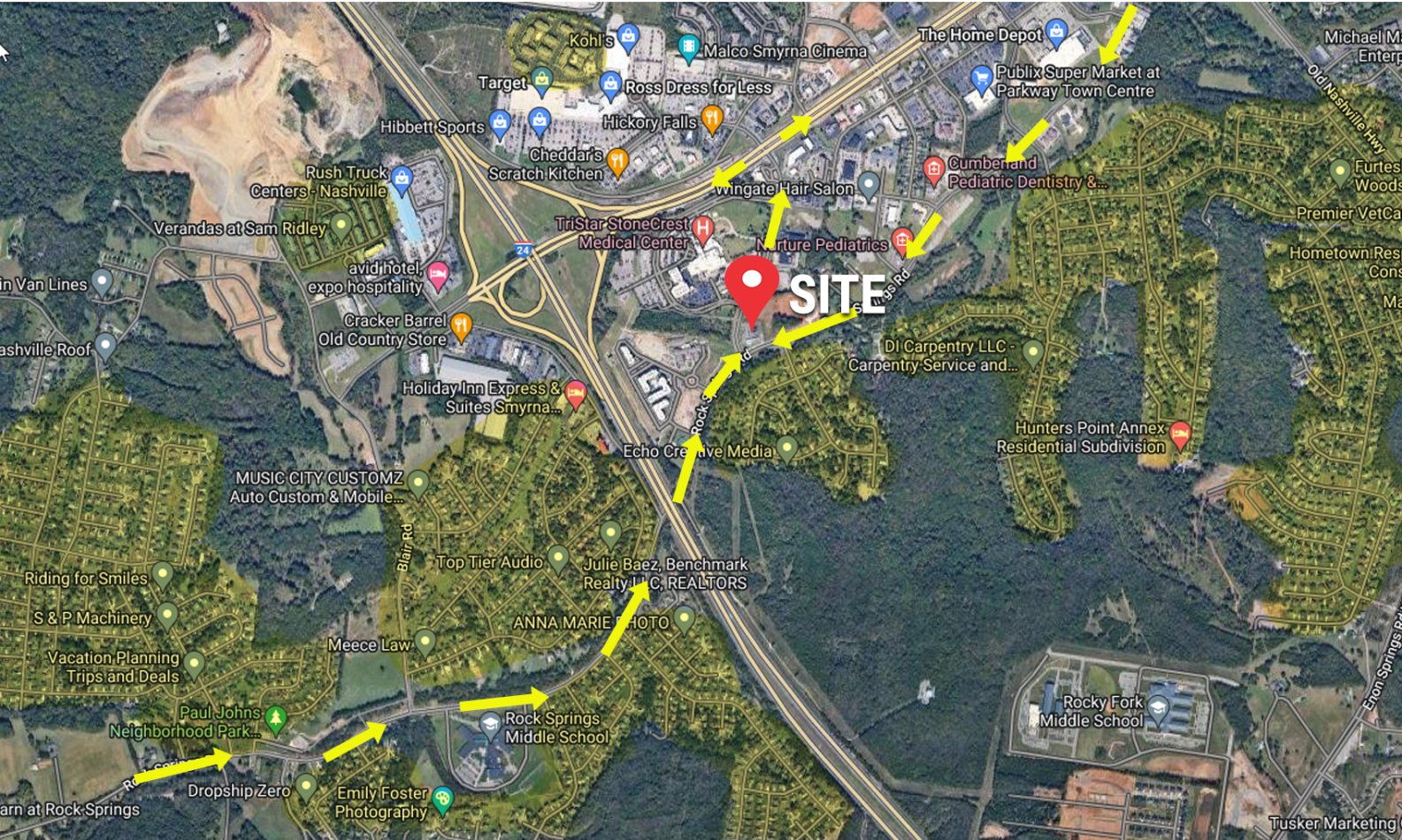
WENDAL W. MILLER
BROKER

wmiller@wwmiller.com

615-618-1172

LEASE

AREA TRAFFIC & RESIDENCES



LOCATION INSIGHTS & ADVANTAGE

This high traffic location is wedged between a vast retail presence and dense neighborhoods to the southwest. Rock Springs Road is the main route for these residents to get to Sam Ridley and I-24.



TRAFFIC DATA

BY



:

15,953 VPD
(2021)

JOIN THE AREA RETAIL TODAY!



WENDAL W. MILLER
BROKER

615-618-1172
wmiller@wwmiller.com

PrimeCommercialRealty.com